



ODN Products



Yangtze Optical Fibre and Cable Joint Stock Limited Company (also known as ‘YOFC’) is established in Wuhan, Hubei Province in May 1988. It’s a technologically innovative enterprise specializing in optical fibre preforms, optical fibres, optical fibre cables and integrated solutions. It is also a global leading supplier of optical fibre preforms, optical fibres and optical fibre cables.

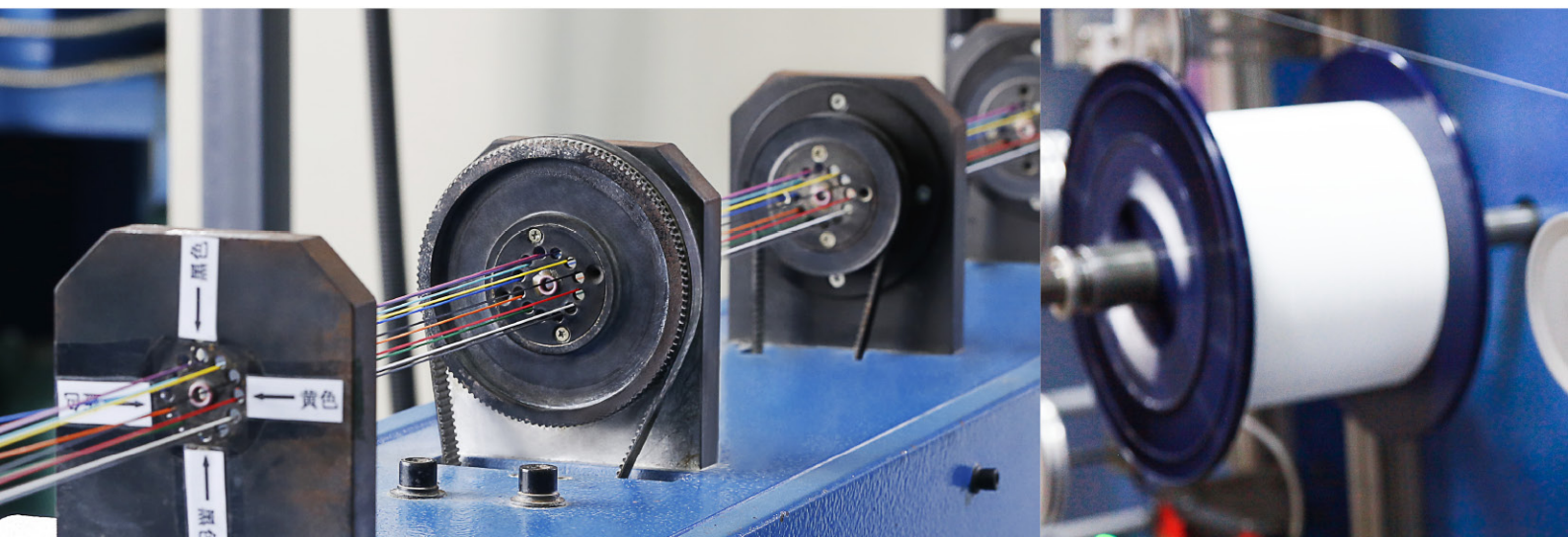
YOFC was listed on the Hong Kong Stock Exchange on December 10, 2014 (Stock Code: 06869.HK), and listed on the Shanghai Stock Exchange on July 20, 2018 (Stock Code: 601869.SH), and is the only A&H shares company in China’s optical fibre and cable industry as well as the first one in Hubei Province.

YOFC mainly produces and sells different types of optical fibre preforms, optical fibres and optical fibre cables that widely installed in telecommunications industry, customized specialty optical fibres and optical fibre cables, RF coaxial cables and accessories. YOFC also provides the integrated systems, project design and services. In addition, YOFC is equipped with a full series of optical fibres , optical fibre cables and solutions, providing a variety of different products and solutions for world’s telecommunications industry and other industries (e.g. Public utility, Transportation, Oil & Chemistry and Medication etc.) and offering its products and services to over 70 countries and regions around the world.

Through introduction, digestion, absorption and re-innovation since its establishment, YOFC has carried out a way to successfully revitalize national industry. YOFC has mastered 3 types of optical fibre preform manufacturing technology (PCVD/OVD/VAD), and honored many awards & reputations such as National Enterprise Technical Center, National First Batch Intelligent Manufacturing Pilot Enterprise, the Second Class National Science and Technology Progress Award(3 times), the China Quality Award, the European Quality Award, etc. In addition, YOFC has obtained over 400 national-granted patents and several foreign invention patents from Europe, US and Japan, and was nominated the support organization for State Key Laboratory in optical fibre and optical fibre cable manufaction technology. It’s also one of the significant members in ITU-T and IEC in setting international standards.

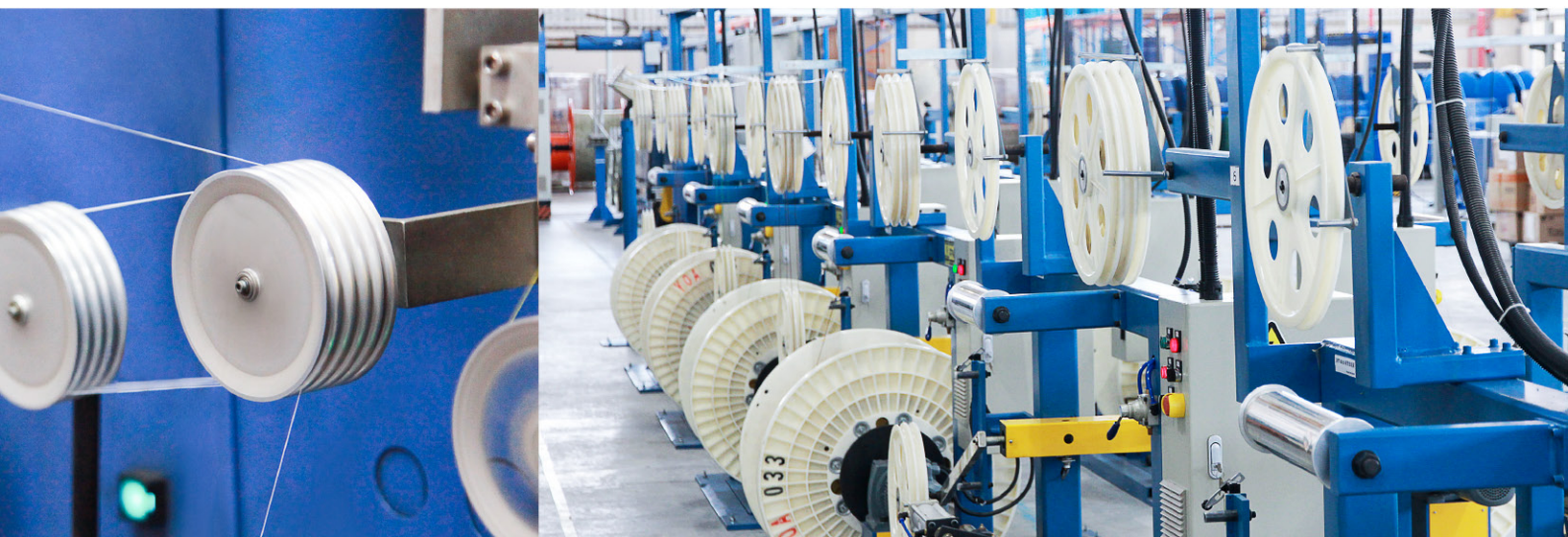
Adhering to the mission of ‘Smart Link Better Life’ , YOFC devotes itself to becoming the leader in information transmission and smart links through its core value ‘Client Focus Accountability Innovation Stakeholder Benefits’ , and builds its strategies in the following 5 aspects: Organic growth strategy of the preform, optical fibre and cable business; Strategy for technological innovation and smart manufacturing; Strategy for internationalization and expansion of business scope; Related diversification strategy; Capital operation strategy for synergy in development.

Contents



ODN Products

ODN Network Summary	01	Optical Fibre Cable Distribution Box	18
Optical Distribution Frames	02	GF-KJN-A Series Optical Splitter Cable Distribution Box	19
GPX035-A Series Optical Distribution Frames (ODF)	03	GF-KJN-B Series Optical Splitter Cable Distribution Box	20
GPX035-B Series Optical Distribution Frames (ODF)	04	GF-KSW Series Optical Fibre Cable Distribution Box	21
GPX035-R Series Optical Distribution Frames (ODF)	05	GF-KSW-A Series Optical Fibre Splitter Cable Distribution Box	22
GPX035-DYX series Fibre Management Unit	06	GF-KSW-B Series Optical Fibre Splitter Cable Distribution Box	23
GPX035-M Series Main Optical Distribution Frames (MODF)	07	GF-KSW-C Series Optical Fibre Splitter Cable Distribution Box	24
GXF035-TC Series Cross Connecting Cabinet	08	Optical Fibre Cable Terminal Box	25
GXF035-TS Series Cross Connecting Cabinet	09	GZFxS-A Series Optical Fibre Cable Terminal Box	26
GXF035-ZC Series Jump-free Cross Connecting Cabinet	10	GZFxPJ -B series Optical Fibre Cable Terminal Box	27
GXF035-ZS Series Jump-free Cross Connecting Cabinet	11	GZR Series 19" Rack-mount Terminal Box	28
Fibre Optic Splice Closure	12	SPX-01 Multimedia Information Box	29
Horizontal Fiber Optic Splice Closure (FOSC)	13	Optical Fibre Information Panel	30
Horizontal Fiber Optic Splice Closure (FOSC)	14	Planar Lightwave Circuit Splitter (PLC Splitter)	31
Half Type Fibre Optic Splice Closure	15	Bare Fibre Splitter	33
Dome Type Fibre Optic Splice Closure	16	Micro-splitter	34
Photoelectric Composite Fibre Optic Splice Closure	17	Cassette Splitter	35



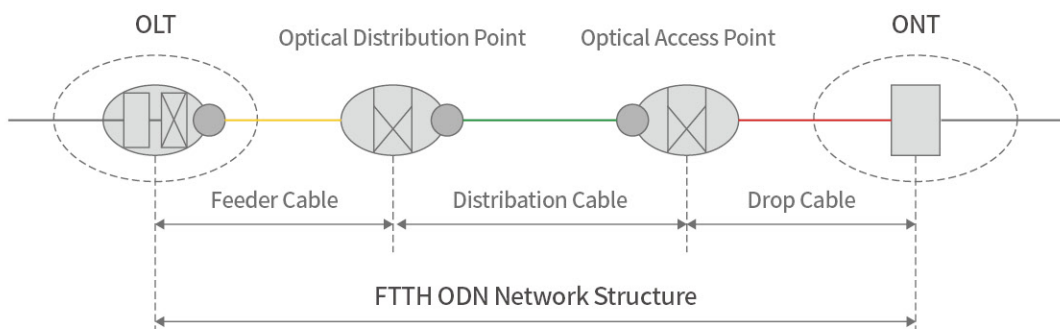
Insert Splitter	36
Tray Splitter	37
Rack-mounted Splitter	38
Optical Fibre Connector	39
Indoor Armored Patch Cord	40
Ribbon/ Bundle Pigtail	41
MPO/MTP Patch Cord	42
Polarization Maintaining Fibre Patch Cord	43
Optical Fibre Adapter	45
Optical Fibre Attenuator	47
Outdoor Cross Connecting Cabinet for Optical Cable	48
Pre-terminated Bow-type Drop Cable	49
Fusion Splice Type Field Assembly Optical Fibre Connector	50
Mechanical Type Field Assembly Optical Fibre Connector	51
FTTH Accessories	53

ODN Network Summary

ODN (Optical Distribution Network) is part of FTTx (Fibre To The Building/ Cabinet/ Home/Node) network, which is totally Passive Optical Network (PON). ODN provides the optical transmission channel between the OLT (Optical Line Terminal) and ONU (Optical Network Unit). Generally, ODN is divided into 5 parts: the central office subsystem, the feeder cable subsystem, the distribution cable subsystem, the drop cable subsystem, and the optical terminal subsystem.

ODN Solution

- YOFC's iFibre ODN solutions are designed for versatility in both outdoor and indoor applications regardless of the network type. These include aerial and underground deployment, as well as cabling in central offices or customer premises
- YOFC is also focused on designing next generation products particularly for FTTx network with high performance level for both residential customers and business. The requirements from the customers include higher bandwidth, lower power consumption and higher density in all areas of FTTx networks, owing to space limitations



Features & Benefits

- **Flexible design options**
Optimized products are available for any type of network
- **Simple Upgrading**
The network expansion is achieved by modular design
- **Reduced installation time and cost**
iFibre products are built for fast installation and easy maintenance
- **High performance & Quality**
iFibre products meet international standards

Optical Distribution Frames

GPX035 series Optical distribution frame is a device used for optical fibre cable connection and scheduling. It is applicable for optical fibre connecting point between the optical transmission network and equipment or between the access network and subscriber cable by cross connection or direct connection to realize the fibre connection, allocation and scheduling conveniently.

Performance

- Operating temperature: -40°C ~ +60°C
- Ambient humidity: ≤ 95% (+40°C)
- Atmospheric pressure: 70 kPa ~ 106 kPa
- Insulation resistance: The insulation resistance between grounding device and cabinet metal components is not less than $2 \times 10^4 \text{ m}\Omega / 500 \text{ V(DC)}$
- Withstand Voltage: The withstand voltage between grounding device and cabinet metal components is not less than 3000V(DC)/1min
- Insertion loss: ≤ 0.3dB
- Return loss: PC type ≥ 45dB, UPC type ≥ 50dB, APC type ≥ 60dB

Complied Standards

- Meet national standards such as YD/T788-2011、GB/T2423-2008、GB/T3873-1998、GB/T9286-1998 and international standards such as IEC 61300-3-15, IEC 61300-3-16, IEC 61300-3-17, IEC 61300-3-23

www.yofc.com



This datasheet can only be a reference, but not a supplement to the contract. Please contact our sales people for more detailed information

GPX035-A Series Optical Distribution Frames (ODF)

Characteristics

- Enclosed type frame, the left and right side plates can be disassembled, conveniently for frame combination
- Non fibre management unit design, Plug and Play design of splicing and terminating tray
- Universal for a variety of adapters such as SC, FC, LC, etc
- Optical splitter tray can be installed. The installation dimensions of the splitter tray are compatible with the splicing and terminating tray
- All operations in front, the cable can be introduced from above or below and be free to allocate
- Reliable cable entry, fixing and protection device, suitable for ribbon and non ribbon optical fibre cable
- Reasonable fibre route, ensure fibre bending radius larger than 37.5mm at any position



Order Guide

Name	Type	Dimension H×W×D(mm)	Capacity (core)	Working Environment	Note
Optical Distribution Frames	GPX035-A-20	2000×600×300	408	Indoor	Enclosed type frame
	GPX035-A-22	2200×600×300	504		
	GPX035-A-26	2600×600×300	576		

GPX035-B Series Optical Distribution Frames (ODF)

Characteristics

- Enclosed type frame, the left and right side plates can be disassembled, conveniently for frame combination
- Non fibre management unit design, Plug and Play design of splicing and terminating tray
- Universal for a variety of adapters such as SC, FC, LC, etc
- Optical splitter tray can be installed. The installation dimensions of the splitter tray are compatible with the splicing and terminating tray
- All operations in front, the cable can be introduced from above or below and be free to allocate
- Reliable cable entry, fixing and protection device, suitable for ribbon and non ribbon optical fibre cable
- Large storage space for pigtails and patch cords
- Reasonable fibre route, ensure fibre bending radius larger than 37.5mm at any position



Order Guide

Name	Type	Dimension H×W×D(mm)	Capacity (core)	Working Environment	Note
Optical Distribution Frames	GPX035-B-20	2000×840×300	408	Indoor	Enclosed type frame
	GPX035-B-22	2200×840×300	504		
	GPX035-B-26	2600×840×300	648		

www.yofc.com



This datasheet can only be a reference, but not a supplement to the contract. Please contact our sales people for more detailed information

GPX035-R Series Optical Distribution Frames (ODF)

Characteristics

- Standard 19" installation frame. Half open structure. All operations in front
- Fibre-management-unit structure, modular design, flexible configuration, convenient installation
- Universal for a variety of adapters such as SC, FC, LC, etc
- The cable can be introduced from above or below and be free to allocate
- Reliable cable entry, fixing and protection device, suitable for ribbon and non ribbon optical fibre cable
- Large storage space for pigtails and patch cords
- Reasonable fibre route, ensure fibre bending radius larger than 37.5mm at any position



Order Guide

Name	Type	Dimension H×W×D(mm)	Capacity (core)	Working Environment	Note
Optical Distribution Frames	GPX035-R-20	2000×840×300	504	Indoor	Half open structure
	GPX035-R-22	2200×840×300	576		
	GPX035-R-26	2600×840×300	720		

GPX035-DYX series Fibre Management Unit

GPX035-DYX series fibre management unit is installed in a 19" standard cabinet/frame as a unit box integrated with splicing and terminating function. Its installation and operation is convenient and flexible.



Characteristics

- Standard 19" structure, convenient installation
- Plug and Play splicing and terminating tray, universal for a variety of adapters such as SC, FC, LC, etc
- The cable can be introduced from above or below and be free to allocate
- Cable entry, fixing and protection device can be chosen, suitable for ribbon and bunch optical fibre cable
- Hanger position can be adjusted for different installation cases

Order Guide

Name	Type	Dimension H×W×D(mm)	Capacity (core)	Working Environment	Note
Fibre Management Unit	GPX035-DYX-24	2U×482×270	24	Standard 19" installation frame/ cabinet	Can be configured with different hangers for 21-inch rack
	GPX035-DYX-48	3U×482×270	48		
	GPX035-DYX-72	4U×482×270	72		
	GPX035-DYX-96	5U×482×270	96		

www.yofc.com

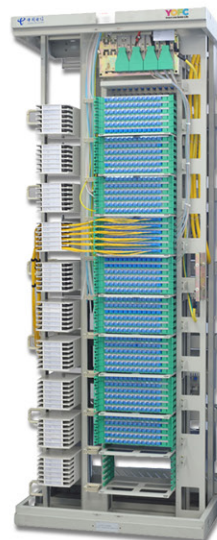


This datasheet can only be a reference, but not a supplement to the contract. Please contact our sales people for more detailed information

GPX035-M Series Main Optical Distribution Frames (MODF)

Characteristics

- Open frame, line side in the front and equipment side in the back, partition management
- 72-core fibre management unit at the line side, modular design, convenient operation
- 96-core rotatable adapter panel at the equipment side, convenient operation and maintenance
- The cable can be introduced from above or below and be free to allocate
- Reliable cable entry, fixing and protection device, suitable for ribbon and non ribbon optical fibre cable
- No cross patch cord route, multi-jumper channel, to realize the patch cord separation, and to ensure that the fibre bending radius is greater than 37.5mm
- Overlong patch cord stored by special storage tray, clean and tidy, easy to find by meticulous management



Order Guide

Name	Type	Dimension H×W×D(mm)	Capacity (core)		Working Environment	Note
			Line side	Equipment side		
Main Optical Distribution Frames	GPX035-M-20	2000×840×600	576	480	Indoor	Open frame
	GPX035-M-22	2200×840×600	720	576		
	GPX035-M-26	2600×840×600	864	672		

GXF035-TC Series Cross Connecting Cabinet



Characteristics

- SMC cabinet with high strength, flame retardant, corrosion resistance
- Three point lock, built-in hinge, effective destruction-proof
- Tray type terminating unit, modular design, convenient installation and expansion
- Reliable cable entry and protection device, suitable for ribbon and non-ribbon cable
- Universal for a variety of adapters such as SC, FC, LC, ST, etc
- Reasonable fibre route, ensure fibre bending radius larger than 37.5mm at any position

Order Guide

Name	Type	Dimension H×W×D(mm)	Capacity		Note
			Termination	Splicing	
Traditional Cross Connecting Cabinet	GXF035-TC-144B	755×570×308	144	72	SMC cabinet, Wall mounted, with base
	GXF035-TC-144	1035×570×308	144	144	SMC cabinet, with base
	GXF035-TC-288	1460×760×380	288	144	SMC cabinet, with base
	GXF035-TC-576	1460×760×540	576	288	SMC cabinet, with base

GXF035-TS Series Cross Connecting Cabinet



Characteristics

- Double-layer stainless steel cabinet, sandwich structure, strong outdoor protection
- Three point lock, built-in hinge, effective destruction-proof
- Tray type terminating unit, modular design, convenient installation and expansion
- Reliable cable entry and protection device, suitable for ribbon and non-ribbon cable
- Universal for a variety of adapters such as SC, FC, LC, ST, etc
- Adapter inclined arrangement, avoid eye burns by laser

Order Guide

Name	Type	Dimension H×W×D(mm)	Capacity		Note
			Termination	Splicing	
Cross Connecting Cabinet	GXF035-TS-144B	1000×590×320	144	72	Steel cabinet, Wall mounted, with base
	GXF035-TS-144	1080×590×320	144	144	Steel cabinet, with base
	GXF035-TS-288	1460×760×380	288	144	Steel cabinet, with base
	GXF035-TS-576	1460×760×570	576	288	Steel cabinet, with base

GXF035-ZC Series Jump-free Cross Connecting Cabinet



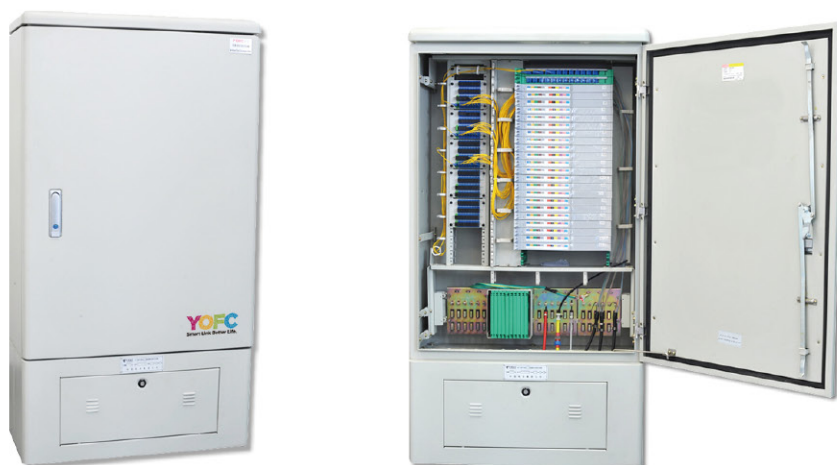
Characteristics

- Function unit modular design, convenient expansion, clear and reasonable fibre route
- Compatible with traditional 12-cores integrated tray
- "Plug-and-play type optical splitter", reduce the quantity of fibre adapters and patch cords, as well as the fault points and insertion loss
- SMC cabinet with high strength, flame retardant, corrosion resistance
- Three point lock, built-in hinge, effective destruction-proof
- Reliable cable entry and protection device, suitable for ribbon and non-ribbon cable
- Universal for a variety of adapters such as SC, FC, LC, ST, etc

Order Guide

Name	Type	Dimension H×W×D(mm)	Capacity Main/ Distribution /Splicing	Note
Jump-free Cross Connecting Cabinet	GXF035-ZC-144	1035×570×308	12/144/72	SMC cabinet, with base
	GXF035-ZC-288	1460×760×380	36/288/144	SMC cabinet, with base
	GXF035-ZC-576	1460×760×540	72/576/288	SMC cabinet, with base

GXF035-ZS Series Jump-free Cross Connecting Cabinet



Characteristics

- Function unit modular design, convenient expansion, clear and reasonable fibre route
- "Plug-and-play type optical splitter", reduce the quantity of fibre adapters and patch cords, as well as the fault points and insertion loss
- Double-layer stainless steel cabinet, sandwich structure, strong outdoor protection
- Three point lock, built-in hinge, effective destruction-proof
- Reliable cable entry and protection device, suitable for ribbon and non-ribbon cable
- Universal for a variety of adapters such as SC, FC, ST, etc

Order Guide

Name	Type	Dimension H×W×D(mm)	Capacity Main/ Distribution /Splicing	Note
Jump-free Cross Connecting Cabinet	GXF035-ZS-144	1080×590×320	12/144/72	Steel cabinet, with base
	GXF035-ZS-288	1460×760×380	36/288/144	Steel cabinet, with base
	GXF035-ZS-576	1460×760×570	72/576/288	Steel cabinet, with base

Fibre Optic Splice Closure



Fibre optic splice closure is mainly applicable for the straight-through and branching of aerial cables, direct-buried cables and duct cables, as well as the protection for cables joints.

Performance

- Protection class: IP68
- Operating Temperature: $-40^{\circ}\text{C} \sim +60^{\circ}\text{C}$
- Storage Temperature: $-40^{\circ}\text{C} \sim +70^{\circ}\text{C}$
- Atmospheric pressure: 70kPa \sim 106kPa
- Pressure loss during the test: Internal pressure: 100kPa, Duration: 24 hrs, no pressure loss
- Temperature cycling: Lowest/Highest temperature: $(-45^{\circ}\text{C} \sim +65^{\circ}\text{C})$; Internal pressure: $60\text{kPa} \pm 5\text{kPa}$, Number of cycles: 20. The tightness and visual appearance is ok
- Crush resistance: 2000N/100mm
- Tensile strength: Can bear the minimal axial load of 800N
- Bending: Can bear 10 cycles of $\pm 45^{\circ}$ bending at 150N tension
- Lifetime: Above 20 years

Complied Standards

- Comply with national standards YD/T814.1-2004, YD/T814.2-2005 and international standards ITU L.13-2003, UL94.

www.yofc.com



This datasheet can only be a reference, but not a supplement to the contract. Please contact our sales people for more detailed information

Horizontal Fiber Optic Splice Closure (FOSC)



Characteristics

- Mechanical and heat shrinkable sealing structure makes good sealing performance after re-entry and re-using
- Engineering PP plastic with high-strength, longer life time and excellent sealing performance
- More splitter trays and 1:8 Blockless or bare PLC Splitters can be chosed and installed
- Suitable for bunchy fibers, $\Phi 5$ - $\Phi 9$ drop cable elements to be chosen, Max. 32 pcs drop cable input/output (specialtype can be customized)
- Shorter installation time and work efficiently

Order Guide

Name	Type	Cable Ports	Capacity (core)	Seal Type	Application
Horizontal Type FOSC	GJS-2022	1 pair inlets 8 outlets	Max. 960	Mechanical and heat shrinkable sealing	Aerial
					Buried
	GJS-2023	1 pair inlets 8 outlets	Max. 576		Wall-mounted
					Hand hole-mounting
					duct-mounting

Horizontal Fiber Optic Splice Closure (FOSC)



Characteristics

- Mechanical and heat shrinkable sealing structure makes good sealing performance after re-entry and re-using
- Engineering PP plastic with high-strength, longer life time and excellent sealing performance
- More splitter trays and 1:8 Blockless or bare PLC Splitters can be chosed and installed
- Suitable for bunchy fibers, $\Phi 5$ - $\Phi 9$ drop cable elements to be chosen, Max. 24 pcs drop cable input/output (specialtype can be customized)
- Shorter installation time and work efficiently

Order Guide

Name	Type	Cable Ports	Capacity (core)	Seal Type	Application
Horizontal Type FOSC	GJS-2024	1 pair inlets 6 outlets	Max. 384	Mechanical and heat shrinkable sealing	Aerial
					Buried
	GJS-2025	1 pair inlets 6 outlets	Max. 192		Wall-mounted
					Hand hole-mounting
					Duct-mounting

Half Type Fibre Optic Splice Closure



Characteristics

- Straight-through, branching, splitter, splicing and distribution functions
- Applications: aerial, buried and mounted in manhole
- Stackable splice trays, easy open and maintenance
- Splice trays can be easily increased and reduced according to capacity
- Bending radius of fibre at any place is greater than 30mm
- Mechanical seal can be reopened, which makes maintenance and capacity increasing more convenient

Order Guide

Name	Type	Cable Ports	Capacity (core)		Seal Type	Application
			Bundle	Ribbon		
Half Type FOSC	GJS1X-JTF424	3 inlets 3 outlets	24	36	Mechanical	Aerial Buried mounted in Manhole
	GJS1X-JTF448	3 inlets 3 outlets	48	72	Mechanical	
	GJS1X-JTF496	3 inlets 3 outlets	96	144	Mechanical	
	GJS1X-JTF4144	3 inlets 3 outlets	144	288	Mechanical	

Dome Type Fibre Optic Splice Closure



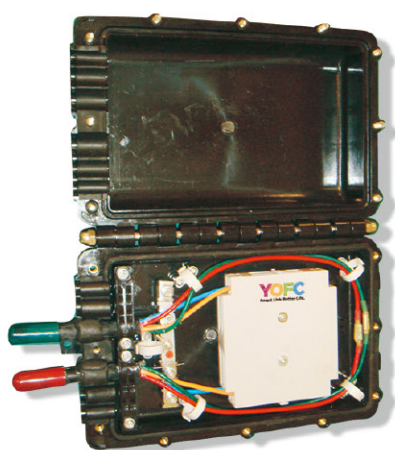
Characteristics

- Straight-through, branching, splitter, splicing and distribution functions
- Applications: aerial, buried and mounted in manhole
- Stackable splice trays, easy open and maintenance
- Splice trays can be easily increased and reduced according to capacity
- Bending radius of fibre at any place is greater than 30mm
- Mechanical or heat-shrinkable seal can be chosen, which make maintenance and capacity increasing more convenient

Order Guide

Name	Type	Cable Ports	Capacity (core)		Seal Type	Application
			Bundle	Ribbon		
Dome type FOSC	GJS2X-JTF224	1 inlets 2 outlets	24	36	Mechanical	Aerial Buried mounted in Manhole
	GJS2X-JTF248	1 inlets 2 outlets	48	72	Mechanical	
	GJS2X-JTF296	1 inlets 2 outlets	96	144	Mechanical	
	GJS2X-RTF4144	1 inlets 4 outlets	144	288	Heat-shrinkable	

Photoelectric Composite Fibre Optic Splice Closure



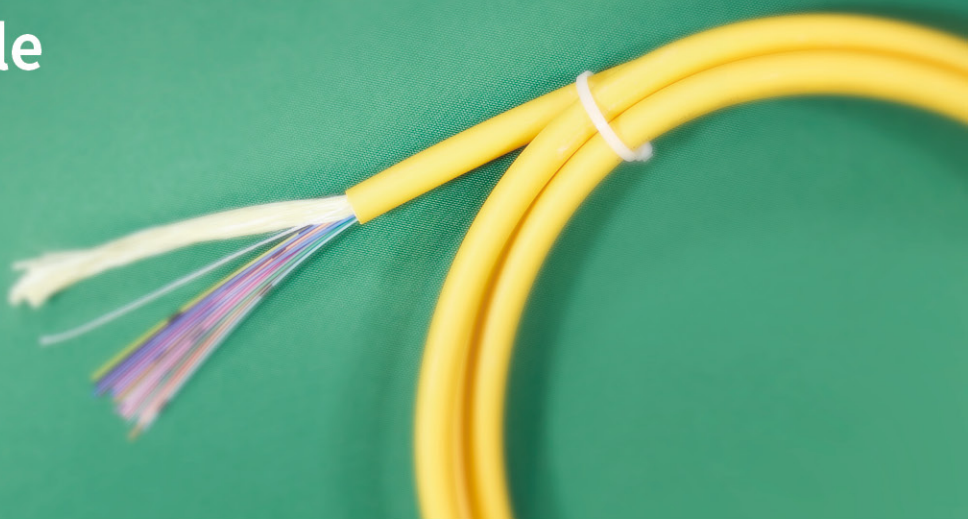
Characteristics

- Electric wires: A.W.G(10 ~ 18) or (0.5 ~ 6.0) mm²
- Straight-through, branching, splitter, splicing and distribution functions
- Applications: aerial, buried and mounted in manhole
- Stackable splice trays, easy open and maintenance
- Splice trays can be easily increased and reduced according to capacity
- Bending radius of fibre at any place is greater than 30mm
- Mechanical or heat-shrinkable seal can be chosen, which make maintenance and capacity increasing more convenient

Order Guide

Name	Type	Cable Ports	Capacity (core)		Seal Type	Application
			Bundle	Ribbon		
Photoelectric composite FOSC	GJD1X-JTF412	3 inlets 3 outlets	12		Mechanical	Aerial Buried mounted in Manhole
	GJD1X-JTF424	3 inlets 3 outlets	24		Mechanical	
	GJS1X-JTF248	3 inlets 3 outlets	48		Mechanical	
	GJS1X-JTF296	3 inlets 3 outlets	96		Mechanical	

Optical Fibre Cable Distribution Box



Optical fibre cable distribution box is a distribution device for terminals in FTTH system. It provides protection and management for fibre cables, and be used for terminating, cable branching, cross connection, and splitting.

It is mainly used at user access points in FTTH-ODN network. It can be divided into indoor and outdoor type according to the installation scenarios, as well as distribution type and opticsplit type according to the functions.

Performance

- Operating temperature: -25°C~ +55°C (Indoor), -40°C~ +60°C (Outdoor type)
- Ambient humidity: $\leq 95\%$ (+40°C)
- Atmospheric pressure: 70kPa ~ 106kPa
- Protection class: indoor type IP53, outdoor type IP55
- Insulation resistance: not less than $2 \times 10^4 \text{M}\Omega/500\text{V}(\text{DC})$
- Withstand Voltage(V): not less than 3000V(DC)/1min
- Insertion loss(dB): $\leq 0.3\text{dB}$
- Return loss (dB): PC type $\geq 45\text{dB}$, UPC type $\geq 50\text{dB}$, APC type $\geq 60\text{dB}$

Complied Standards

- Comply with national standards such as YD/T2150-2010, GB/T2423-2008, GB/T3873-1998, GB/T9286-1998 and international standards such as IEC 61300-3-15, IEC 61300-3-16, IEC 61300-3-17, IEC 61300-3-23 and etc.

GF-KJN-A Series Optical Splitter Cable Distribution Box



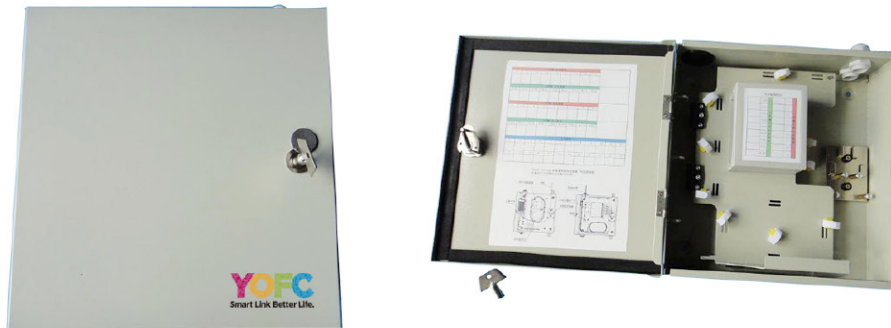
Characteristics

- High quality sheet metal material, electrostatic spraying treatment on the surface, good mechanical performance, elegant appearance, robustness and durability
- Suitable for indoor, wall-mounted, pole, aerial installation
- Splitter Type : Cassette splitter, 1:8,1:16,1:32
- Built-in stacked splice trays, easy to open, the splice trays can be taken down, easy for installation and maintenance
- FC, SC and LC adapters available , modular design, convenient for fixation and maintenance
- Fibre route reasonable, fibre bending radius at any place is greater than 30mm
- The mark is clear on each fibre connection and distribution
- The door opening angle is greater than 120° for easy operation and maintainance
- The redundant fibre is wound and protected

Order Guide

Name	Type	Dimension H×W×D (mm)	Split Ratio	Working Environment	Note
Optical Splitter Cable Distribution Box	GF-KJN-A24	380×350×105	1:16	Indoor	Splitter Type (Cassette)
	GF-KJN-A48	400×350×130	1:32		

GF-KJN-B Series Optical Splitter Cable Distribution Box



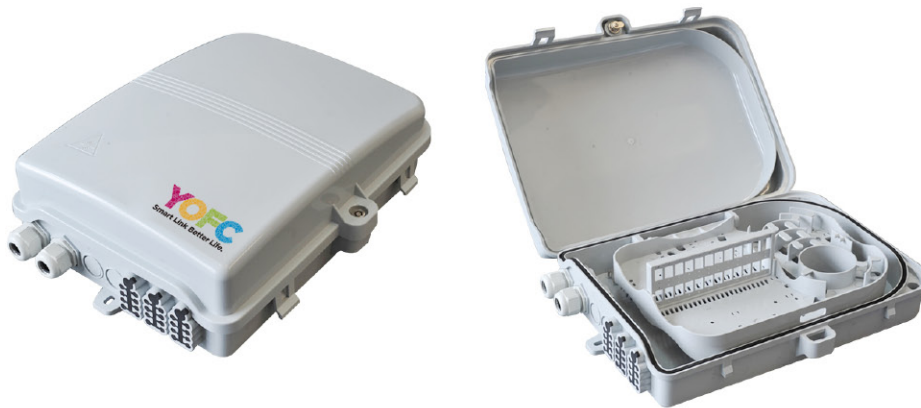
Characteristics

- High quality sheet metal material, electrostatic spraying treatment on the surface, good mechanical performance, elegant appearance, robustness and durability
- Suitable for indoor, wall-mounted, pole, aerial installation
- Splitter Type: Insert splitter 1:4,1:8,1:16,1:32
- Turn-over structure, layout is reasonable with splicing zone below and distribution zone above
- Fibre route reasonable, fibre bending radius at any place is greater than 30mm
- The mark is clear on each fibre connection and distribution
- The door opening angle is greater than 120° for easy operation and maintainance
- The redundant fibre is wound and protected

Order Guide

Name	Type	Dimension H×W×D (mm)	Split Ratio	Working Environment	Note
Optical Splitter Cable Distribution Box	GF-KJN-B16	350×340×100	1:16	Indoor	Insert splitter
	GF-KJN-B32	460×340×100	1:32		

GF-KSW Series Optical Fibre Cable Distribution Box



Characteristics

- High quality engineering plastic injection molding, good mechanical performance, elegant appearance, robustness and durability
- Suitable for indoor, wall-mounted, pole, aerial installation
- Turn-over structure, layout is reasonable with splicing zone below and distribution zone above
- FC, SC and LC adapters available , modular design, convenient for fixation and maintenance
- Fibre route reasonable, fibre bending radius at any place is greater than 30mm
- The mark is clear on each fibre connection and distribution
- The door opening angle is greater than 120° for easy operation and maintainance
- The redundant fibre is wound and protected

Order Guide

Name	Type	Dimension H×W×D (mm)	Split Ratio	Working Environment	Note
Optical Splitter Cable Distribution Box	GF-KSW-12	220×180×62	12	Indoor	Distribution type
	GF-KSW-24	315×275×96	24	outdoor	

GF-KSW-A Series Optical Fibre Splitter Cable Distribution Box



Characteristics

- High quality engineering plastic injection molding, good mechanical performance, elegant appearance, robustness and durability
- Suitable for indoor, wall-mounted, pole, aerial installation
- Splitter Type: Insert splitter 1:4,1:8,1:16,1:32
- Turn-over structure, layout is reasonable with splicing zone below and distribution zone above
- FC, SC and LC adapters available , modular design, convenient for fixation and maintenance
- Fibre route reasonable, fibre bending radius at any place is greater than 30mm
- The mark is clear on each fibre connection and distribution
- The door opening angle is greater than 120° for easy operation and maintainance
- The splice tray can be taken down and put on the bench for splicing, convenient operation
- The redundant fibre is wound and protected

Order Guide

Name	Type	Dimension H×W×D (mm)	Split Ratio	Working Environment	Note
Optical Fibre Splitter Cable Distribution Box	GF-KSW-A16	340×265×115	1:16	Indoor	Splitter Type (Cassette)
	GF-KSW-A32	420×320×125	1:32	outdoor	

GF-KSW-B Series Optical Fibre Splitter Cable Distribution Box



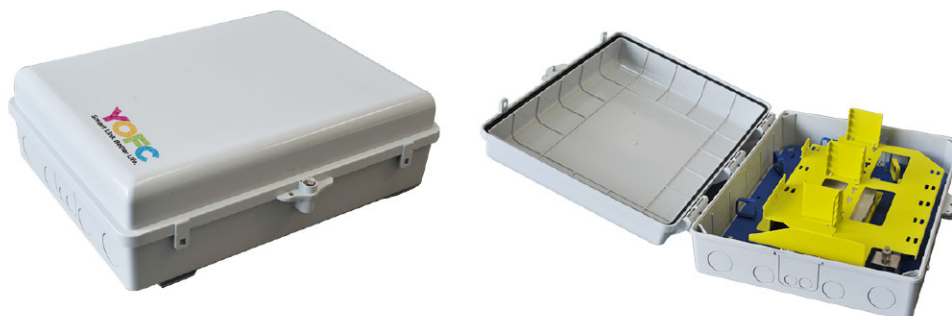
Characteristics

- High strength composite material (SMC), good mechanical performance, elegant appearance, sturdiness and durability
- Suitable for indoor and outdoor, wall-mounted, pole, aerial installation
- Splitter Type: Insert splitter, 1:4, 1:8, 1:16, 1:32
- Turn-over structure, layout is reasonable, splicing zone below and distribution zone above
- FC, SC and LC adapters available , modular design, convenient for fixation and maintenance
- Fibre route reasonable, fibre bending radius at any place is greater than 30mm
- The mark is clear on each fibre connection and distribution
- The door opening angle is greater than 120° for easy operation and maintainance
- The splice tray can be taken down and put on the bench for splicing, convenient operation
- The redundant fibre is wound and protected

Order Guide

Name	Type	Dimension H×W×D (mm)	Split Ratio	Working Environment	Note
Optical Fibre Splitter Cable Distribution Box	GF-KSW-B16	385×295×100	1:16	Indoor	Insert splitter
	GF-KSW-B32	425×340×160	1:32	outdoor	

GF-KSW-C Series Optical Fibre Splitter Cable Distribution Box



Characteristics

- High strength engineering plastic injection molding, good mechanical performance, elegant appearance, robustness and durability
- Suitable for indoor and outdoor, wall-mounted, pole, aerial installation
- Splitter Type : Insert splitter, 1:4, 1:8, 1:16, 1:32
- Turn-over structure, layout is reasonable, splicing zone below and distribution zone above
- Fibre route reasonable, fibre bending radius at any place is greater than 30mm
- The mark is clear on each fibre connection and distribution
- The box door opening Angle is greater than 120° for easy operation and maintainance
- The splice tray can be taken down and put on the bench for splicing, convenient operation
- The redundant fibre is wound and protected

Order Guide

Name	Type	Dimension H×W×D (mm)	Split Ratio	Working Environment	Note
Optical Fibre Splitter Cable Distribution Box	GF-KSW-C16	340×265×115	1:16	Indoor	Insert splitter
	GF-KSW-C32	420×320×125	1:32	outdoor	

Optical Fibre Cable Terminal Box



Optical Fibre Cable Terminal Box is used for fibre termination and cross connection. It is suitable for connecting all kinds of cables, and protects optical fibre connectors.

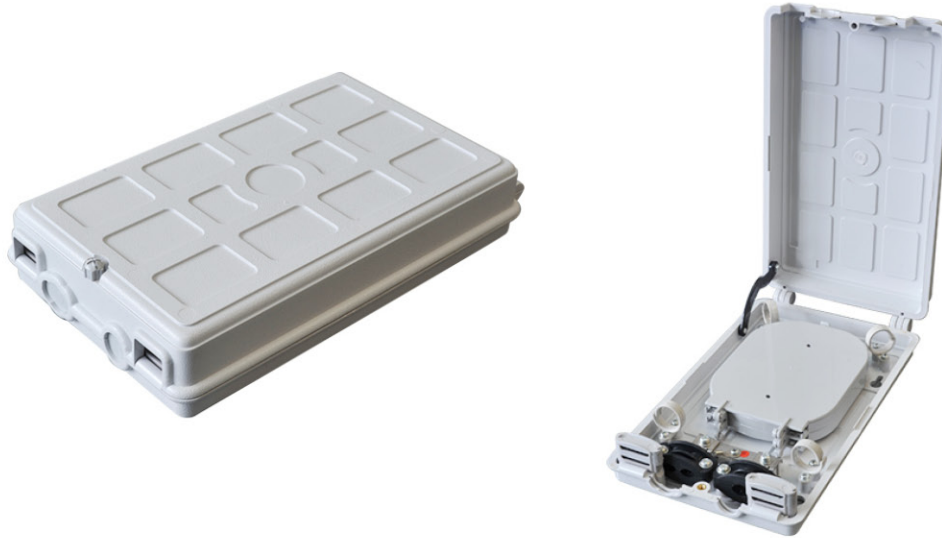
Performance

- Operating temperature: -5°C~ +40°C (Indoor type), -20°C~ +60°C (Outdoor type)
- Ambient humidity: $\leq 95\%$ (+40°C)
- Atmospheric pressure: 70kPa ~ 106kPa
- Insulation resistance: not less than $2 \times 10^4 \text{M}\Omega/500\text{V(DC)}$
- Withstand Voltage: not less than 3000V(DC)/1min
- Insertion loss(dB): $\leq 0.3\text{dB}$
- Return loss (dB): PC type $\geq 45\text{dB}$, UPC type $\geq 50\text{dB}$, APC type $\geq 60\text{dB}$

Complied Standards

- Meet national standards, such as YD/T925-2009, GB/T2423-2008, GB/T3873-1998, GB/T 9286-1998, and international standards, such as IEC 61300-3-15, IEC 61300-3-16, IEC 61300-3-17, IEC 61300-3-23, etc.

GZFxS-A Series Optical Fibre Cable Terminal Box



Characteristics

- High quality PC material injection molding, good mechanical performance, elegant appearance, robustness and durability
- Suitable for indoor, wall-mounted installation
- Clamshell structure, lock by one bolt, easy to open and close
- Built-in stacked splice trays, easy to open, the splice tray can be taken down, easy for installation and maintenance.
- Pigtail fastened by imported elastomer, fixed reliably and convenient for use
- Offer fixing devices for cables, pigtails, and grounding device inside the box
- Fibre route reasonable, fibre bending radius at any place is greater than 30mm

Order Guide

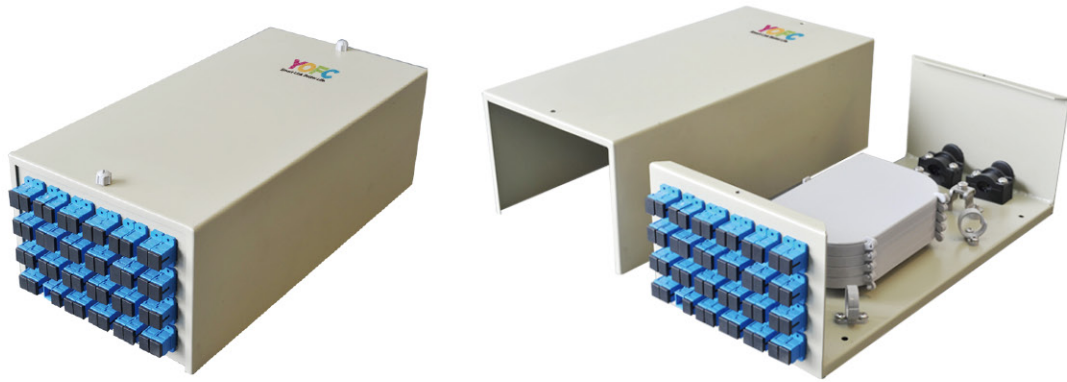
Name	Type	Dimension H×W×D (mm)	Capacity (core)	Working Environment	Note
Optical Fibre Cable Terminal Box	GZFxS-A12	198×112×45	12	Indoor	Pigtail Type
	GZFxS-A24	265×153×55	24		

www.yofc.com



This datasheet can only be a reference, but not a supplement to the contract. Please contact our sales people for more detailed information

GZFxPJ -B series Optical Fibre Cable Terminal Box



Characteristics

- High quality sheet metal material, electrostatic spraying treatment on the surface, good mechanical performance, Elegant appearance, robustness and durability
- Suitable for indoor ,wall-mounted installation
- FC, SC and LC adapters available , modular design, convenient for fixation and maintenance
- Built-in stacked splice trays, easy to open, the splice tray can be taken down, easy for installation and maintenance.
- Pigtail fastened by imported elastomer, fixed reliably and convenient for use
- Offer fixing devices for cables, pigtails, and grounding device inside the box
- Fibre route reasonable, fibre bending radius at any place is greater than 30mm

Order Guide

Name	Type	Dimension H×W×D (mm)	Capacity (core)	Working Environment	Note
Optical Fibre Cable Terminal Box	GZFxPJ-B24	352×168×110	24	Indoor	Adapter Type
	GZFxPJ-B48	352×168×170	48		

GZR Series 19" Rack-mount Terminal Box



Characteristics

- Standard 19" structure, hanger position can be adjusted, adapting to different installation scenarios
- High density, 1U height up to 48 cores (LC duplex adapter)
- Drawer structure, convenient for use, maintenance and operation
- Unified rack, a variety of adapter panels can be chosen, flexible for modification and expansion
- Applicable to FC (D type), SC, LC, LC(duplex) and other adapters by choosing different adapter panels

Order Guide

Type	Dimension H×W×D (mm)	Capacity (core)	Working Environment	Note
GZR-12SC	19" Rack-mount Terminal Box	12	1UX482X200 Standard 19" installation frame/cabinet	2×6-core SC panel +1×blank panel
GZR-12FC		12		2×6-core FC panel +1×blank panel
GZR-12LC		12		2×6-core FC panel +1×blank panel
GZR-24SC		24		3×8-core SC panel
GZR-24FC		24		3×8-core FC panel
GZR-24LC		24		3×8-core LC panel
GZR-24LC2		24		2×12-core LC(duplex) panel +1×blank panel
GZR-36LC2		36		3×12-core LC(duplex) panel
GZR-48LC2		48		3×16-core LC(duplex) panel

SPX-01 Multimedia Information Box

The SPX-01 multimedia information box is generally used for home decoration nowadays. It provides unified management for weak current signal from internet, telephone, television, and optical fibre , The multimedia information box makes the wiring clear and tidy, and provides protection and management for the line and network equipment.



Characteristics

- Indoor, wall embedded installation
- High quality sheet metal material for body of the box with good mechanical performance, high strength engineering plastic for cover of the box with elegant appearance and durability
- Turn-over structure, provides space for modem, router, and other modules
- Reasonable fibre route, fibre bending radius at any place is greater than 30mm
- The door opening angle is greater than 150° for easy operation and maintainance

Performance

- Operating Temperature: -5°C ~ +45°C
- Ambient humidity: ≤95%(+40°C)
- Atmospheric pressure: 70 kPa ~ 106 kPa

Complied Standards

- Comply with national standards YDT 1313-2008 、GB50846-2012 and international standards such as UL 94, IEC 60529 and etc.

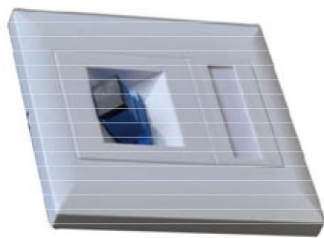
Order Guide

Name	Type	Dimension H×W×D (mm)	Working Environment
Multimedia Information Box	SPX-01A	300×250×110	Indoor wall embedded
	SPX-01B	350×300×110	
	SPX-01C	400×300×110	

Optical Fibre Information Panel

Optical fibre information panel is a fixed connection device which is used to terminate the drop cable in office area, residential area, business district, and consists of bottom box and front cover.

Optical fibre information panel can be classified into exposed and concealed type according to the way of installation.



Performance

- Operating Temperature: -40°C ~ +70°C
- Storage Temperature: -40°C ~ +70°C
- Atmospheric pressure: 70kPa ~ 106kPa
- Cable types: drop cable, pigtail, outdoor cable(Φ8mm ~ Φ10.5mm)

Complied Standards

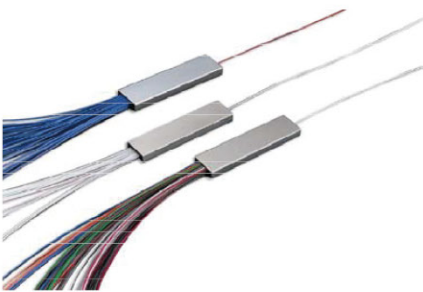
- Meet national standard Q/CT 2353-2011

Order Guide

Name	Type	Dimension H×W×D (mm)	Adapter		Way of Installation
			Type	No. of slot	
Optical Fibre Information Panel	GOM	86×86×24	SC&FC	2	Exposed
	GOA	86×86×9	SC(duplex)	1	Concealed

Planar Lightwave Circuit Splitter (PLC Splitter)

Planar Lightwave Circuit Splitter (PLC) is based on the wave circuit process of unique silica glass, with reliable precisely aligned fibre pigtail in a miniature package. It provides a low cost distribution solution with small dimension and high reliability.



Characteristics

- Low insertion loss, low PDL, high return loss.
- Excellent uniformity and flatness over a wide wavelength range from 1260nm to 1620nm
- Operation temperature from -40°C to +85°C

Complied Standards

- Comply with Telcordia GR-1209-CORE Issue 4, Telcordia GR-1221-CORE Issue 3 and YD/T2000.1-2009 standards.

Paramete	Unit		1×2	1×4	1×8	1×16	1×32	1×64
Insertion Loss	Typ.	dB	3.5	6.8	10.0	13.2	16.5	20.0
	Max	dB	3.7	7.0	10.4	13.5	17.0	20.5
Loss Uniformity	Max	dB	0.6	0.6	1.0	1.1	1.5	1.8
PDL	Typ.	dB	0.1	0.1	0.1	0.2	0.2	0.2
	Max	dB	0.2	0.2	0.2	0.3	0.3	0.3
Return Loss	Min	dB	55 (Premium grade) /50 (Standard grade)					
Directivity	Min	dB	55					
Operating Wavelength		nm	1260~1650					
Operating/ Storage Temperature		°C	-40~+85					
Fibre Type		-	G657A or Customized					

Technical Parameters and Specifications of 2×N Splitters

Paramete	Unit		2×2	2×4	2×8	2×16	2×32	2×64
Insertion Loss	Typ.	dB	4.0	7.2	10.6	13.8	17.0	21.0
	Max	dB	4.2	7.5	11.0	14.3	17.5	21.5
Loss Uniformity	Max	dB	1.2	1.5	1.6	1.8	2.3	2.5
PDL	Typ.	dB	0.2	0.2	0.2	0.2	0.2	0.2
	Max	dB	0.3	0.3	0.3	0.4	0.4	0.4
Return Loss	Min	dB	55 (Premium grade) /50 (Standard grade)					
Directivity	Min	dB	55					
Operating Wavelength		nm	1260~1650					
Operating/ Storage Temperature		°C	-40~+85					
Fibre Type		-	G657A or Customized					



Bare Fibre Splitter

It's a kind of ODN product suitable for PON networks that can be installed in the pigtail cassette, test instrument and WDM system, which minimizes the space occupation. Bare fibre splitter is relatively fragile on fibre protection and need a complete protection design on carrying box body and device.



Dimensions

Split Ratio	1×2	1×4	1×8	1×16	1×32	1×64
L×W×H (mm)		40×4×4		50×4×4	55×7×4	60×12×4

Micro-splitter

Micro-splitter has stronger fibre protection than bare fibre splitter, which is a miniaturization result of cassette splitter. It's mainly used for various connection and distribution boxes or network cabinets and it's an intermediate choice between volume miniaturization and reliable fibre protection. SC/LC/FC connectors are available, other connectors can be customized.



Dimensions

Split Ratio	1×2	1×4	1×8	1×16	1×32	1×64
L×W×H (mm)		50×7×4/ 55×7×4		80×20×6	120×40×6	60×12×4

Cassette Splitter

Cassette splitter is most commonly used in the PON networks, and it provides the complete protection for inner optical components and cable, as well as the convenient and reliable installation, but its volume is relatively large. It's mainly used for various connection and distribution products or network cabinets.

SC/LC/FC connectors are available, other connectors can be customized.



Dimensions

Split Ratio	1×2	1×4	1×8	1×16	1×32	1×64
L×W×H (mm)		100×80×10		120×80×18	140×115×18	

Insert Splitter

Insert splitter is commonly used in the PON networks and it provides the complete protection for inner optical components and cables, as well as the convenient and reliable installation with modular design. It's mainly used with insert splitter boxes and jump-free optical cross connection cabinets.

SC/LC connectors are available, other connectors can be customized.



Dimensions

Split Ratio	1×2	1×4	1×8	1×16	1×32	1×64
L×W×H (mm)		130×100×25		130×100×50	130×100×76	130×100×154

Tray Splitter

Tray splitter has good optical circuit design so that ensures fibre bending radius as well as the realization of channel capacity increase . It's installed in the 19" standard ODF and 19" standard cabinet. It's also able to finish the old product upgrading on space utilization seamlessly. Tray splitter can be divided into pigtail type and flange type.

SC/LC/FC connectors are available, other connectors can be customized.



Dimensions

Split Ratio	1×2	1×4	1×8	1×16	1×32	1×64
L×W×H (mm)	1pc of 12-core Intergrated Tray				2pcs of 12-core Intergrated Tray	

Order Guide

Product Number = Y-Production process Split Ratio	Packing Type	Ending Type	Connector Type	Pigtail Type	Input pigtail length	Output pigtail length
P=PLC 1002=1:2	M=Micro Splitter	F=With connector	SU=SC/UPC	25=0.25mm	05=0.5m	05=0.5m
F=FBT 1004=1:4	B=Cassette Splitter	N=Without connector	SA=SC/APC	09=0.9mm	10=1.0m	10=1.0m
1008=1:8	P=Insert Splitter	A=Adapter	FU=FC/UPC	20=2.0mm	15=1.5m	15=1.5m
1016=1:16	T=Tray Splitter		FA=FC/APC	30=3.0mm	20=2.0m	20=2.0m
1032=1:32	R=Rack-mounted Splitter		LU=LC/UPC		XX=Customized	XX=Customized
1064=1:64			LA=LC/APC			
2002=2:2						
2004=2:4						
2008=2:8						
2016=2:16						
2032=2:32						
2064=2:64						

E.g.: PN: YP-1008-B-F-SU-20-10-20

stands for: PLC with 1:8 split ratio and cassette type, whose ending type is pigtail with SC/UPC connector, 2.0mm loose tube is used for the pigtail as well. Input pigtail is 1.0m long and output is 2.0m long.

Rack-mounted Splitter

Rack-mounted splitter is composed of splitter unit box and splitter. The plate is made of high quality steel with electrostatic spraying treatment on the surface. It's applicable for the centralized splitting network structure. It can be installed in 19" standard integrated distribution cabinet, network cabinet with opening rack.

SC/LC/FC connectors are available, other connectors can be customized.



Dimensions

Split Ratio	1×2	1×4	1×8	1×16	1×32	1×64
L×W×H (mm)	19" 1U (2U/3U.....) Customized					

Optical Fibre Connector

Optical fibre connector is also known as optical fibre patch cord, which is a flexible device that connects fibre cables requiring quick connection and disconnection. Optical fibre connector joins two fibres without splicing.

Simplex, duplex, micro-duplex cables can be provided, as well as SC/ FC/ LC/ ST/ MU/ MT-RJ/ E2000/ FSMA connectors.



Characteristics

- Low insertion loss, high return loss
- End face polish: PC,UPC,APC
- Durability : 500 times
- Available in PVC,LSZH etc for cable sheath

Complied Standards

- Meet standards: Telcodia GR-326-CORE Issue 4, IEC 61754 series, YD/T 1272 series, etc.

Performance

Connector Type	SC/FC/LC/ST/MU/MT-RJ/E2000/FSMA etc.	
Fibre Type	Single-mode	Multi-mode
Insertion Loss(dB)	Typical0.2,Max.0.3	Typical0.2,Max.0.3
Return Loss(dB)	PC≥45, UPC≥55, APC≥60	NA
Operation Temperature (°C)	-40~+75	-40~+75
Environment-friendly	Comply with RoHS	Comply with RoHS

Indoor Armored Patch Cord

Indoor armored patch cord is used for the high crush resistance requirement application. It is composed of 2.0mm or 3.0mm indoor armored cable and optical connectors, while SC/ FC/ LC/ ST connectors can be provided.



Characteristics

- High tensile strength and crush resistance
- Small diameter, light weight
- Flame retardant, environment-friendly

Complied Standards

- Meet standards: Telcodia GR-326-CORE Issue 4, IEC 61754 series, YD/T 1272 series, etc.

Performance

Optical Fibre Connector	SC/FC/LC/ST/MU/MT-RJ/E2000, etc.		
Fibre Type	Single-mode(1310&1550nm)		Multi-mode(850&1300nm)
Cable Diameter(mm)	Φ2.0mm、Φ3.0mm		Φ2.0mm、Φ3.0mm
Insertion Loss(dB)	Typical0.2,Max.0.3		Typical 0.2,Max.0.3
Return Loss(dB)	PC≥45, UPC≥50, APC≥60,		NA
Operation Temperature (°C)	-40~+75		-40~+75
Fibre Geometry	Radius	10~25mm(PC/UPC)	NA
		5~12mm(APC)	
	Apex offset	0-50μm0 0-50μm	
	Fibre height	-50-+50nm	
Environment-friendly	Comply with RoHS		Comply with RoHS

Ribbon/ Bundle Pigtail

Ribbon/ Bundle pigtail is used in the distribution subsystem of communication networks, and it also makes the distribution subsystem managent convenient. It is made up of the splitted 2-12F optical fibre cable and connectors.

The fan-out portion has 0.9mm colour spectrum cable or 2mm cable, which are set optional.



Characteristics

- Fan-out portion available in 0.9mm tight buffened fibre with color spectrum or 2.0mm cable
- The length of fan-out portion can be customized,while different lengths of portions are available
- Perfect performance at -40°C for long term
- Low insertion loss, high return loss

Complied Standards

- Meet standards: Telcodia GR-326-CORE Issue 4, IEC 61754 series, YD/T 1272 series, etc.

Performance

Connector Type	SC/LC/FC/ST etc.	
Fibre Type	Single-mode	Multi-mode
Insertion Loss(dB)	Typical0.2,Max.0.3	Typical0.2,Max.0.3
Return Loss(dB)	PC≥45, UPC≥55, APC≥60,	NA
Operation Temperature (°C)	-40~+75	-40~+75
Repeatability (dB)	≤0.2	≤0.2
Interchangeability(dB)	≤0.2	≤0.2
Environment-friendly	Comply with RoHS	Comply with RoHS

MPO/MTP Patch Cord

MPO or MTP connectors are terminated at both ends of ribbon or round cable while high quality MT ferrule connector are utilized to ensure consistent low loss and reliability. This type of patch cord is used in data centre and other high density application scenarios.



Characteristics

- High quality MT ferrule, saving space for equipment
- 100% factory terminated and tested
- LSZH, OFNR, OFNP are available for outer sheath, meet flame retardant requirement

Complied Standards

- Meet standards: Telcordia GR-1435-CORE Issue 2, IEC 61754-7, IEC 61755-3-31.
- Flame retardant: IEC 61304, IEC 60754-1, IEC 60332-3C.

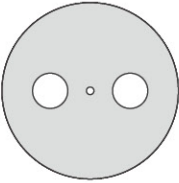
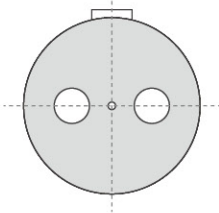
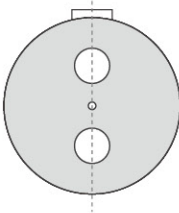
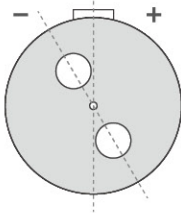
Performance

Connector Type	SC/LC/FC/ST etc.		
Fibre Type	Single-mode (standard)	Single-mode (high-precision)	Multi-mode
Insertion Loss(dB)	≤ 0.7	≤ 0.35	≤ 0.7
Return Loss(dB)	≥ 50	≥ 60	≥ 20
Operation Temperature (°C)	-20~+60	-20~+60	-20~+60
Durability	500 times	500 times	500 times
Environment-friendly	Comply with RoHS	Comply with RoHS	Comply with RoHS

Order Guide

Side A	Polish A	Side B	Polish B	Fibre	Cable	Length
LC	PC	LC	PC	G.652D	0.9mm	1m
SC	UPC	SC	UPC	G.657A1	2.0mm	5m
FC	APC	FC	APC	G.657A2	3.0mm	10m
ST		ST		G.657B	2×2.0mm	20m
MU		MU		50/125μm	2×3.0mm	customized
E2000		E2000		62.5/125μm	2mm armor	
MPO		MPO		OM3	3mm armor	
MTP		MTP		OM4	12F breakout	
				customized	12F loose tube	
					8F ribbon	
					8F round	
					12F bare ribbon	
					12F ribbon	
					12F round	
					customized	

Polarization Maintaining Fibre Patch Cord

Free Adjustable F(Free)	Fast Axis Aligned X(Fast)	Slow Axis Aligned Y(Slow)	Customized AngleO(Other)
			
Key on FC connector is not fixed,and can be rotated to match the equipment	Centreline of key is perpendicular to the line formed by stress field centres and fibre core	Centreline of key parallels the line formed by stress field centres and fibre core	Angle between centre line of key and the line formed by stress field centres and fibre core is determined by the customer

Characteristics

- -22 ~ -35dB High extinction ratio, Insertion loss ≤0.3dB, Axis angle tolerance ≤3°
- Axis angle can be customized : fast axis and slow axis , adjustable
- Available in polarization maintaining fibres for 980nm 1310nm 1550nm etc.

Complied Standards

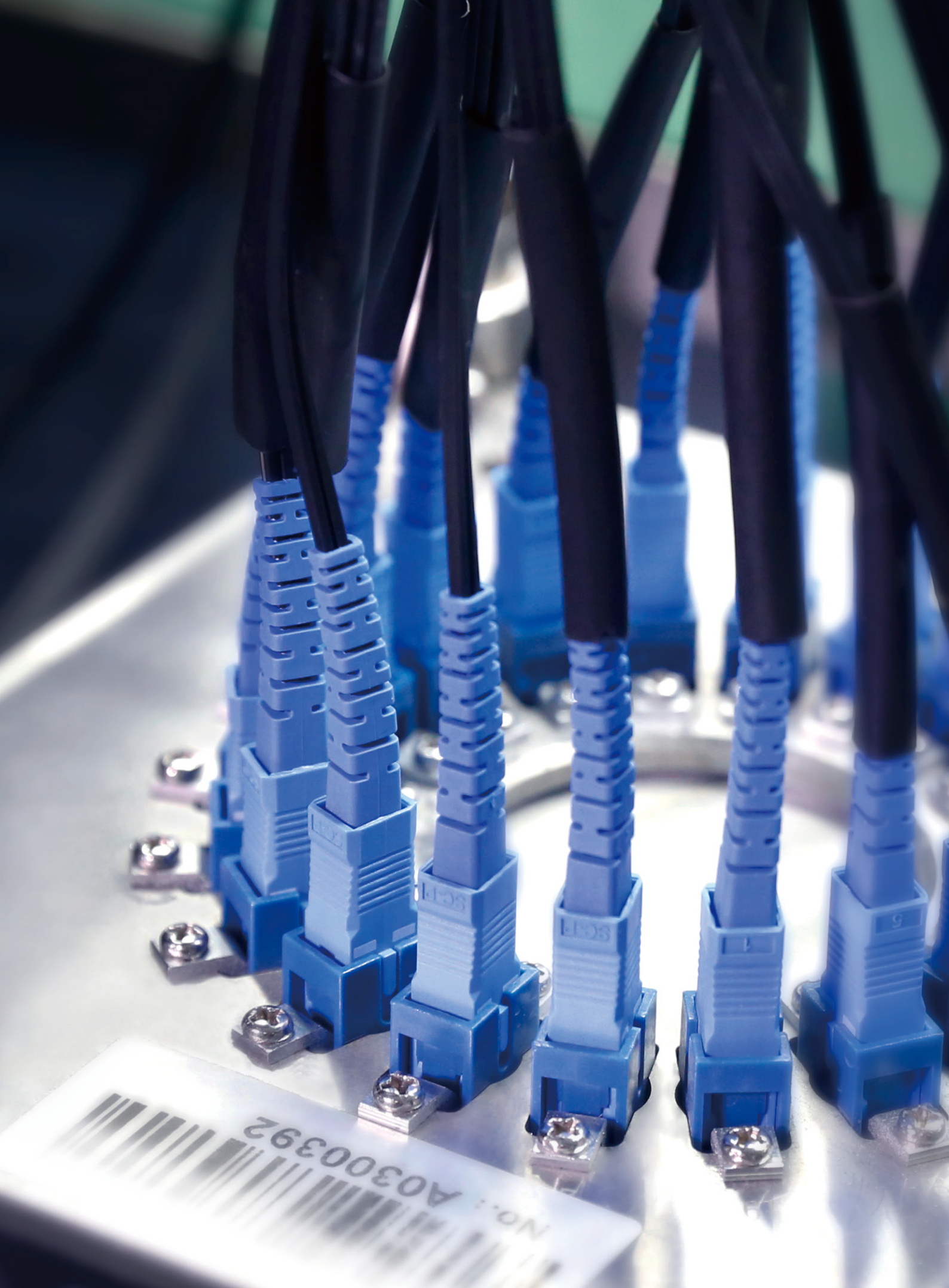
- Meet standards: Telcodia GR-326-CORE Issue 4, IEC 61754 series.

Performance

Optical Connector	FC/PC,FC/APC,LC/PC,LC/APC		
Fibre Parameter	Mode field diameter(μm)	Cladding diameter(μm)	Application wavelength(nm)
	6.5±1	125	980
	6.0±1,9.0±1	80, 125	1310
	6.5±1, 10.5±1	80, 125	1550
Operation Temperature (°C)	-40°C~+85°C		
Sheath	Φ0.9mm, Φ2.0mm, Φ3.0mm, Φ0.9mm tight buffer , others		

Order Guide

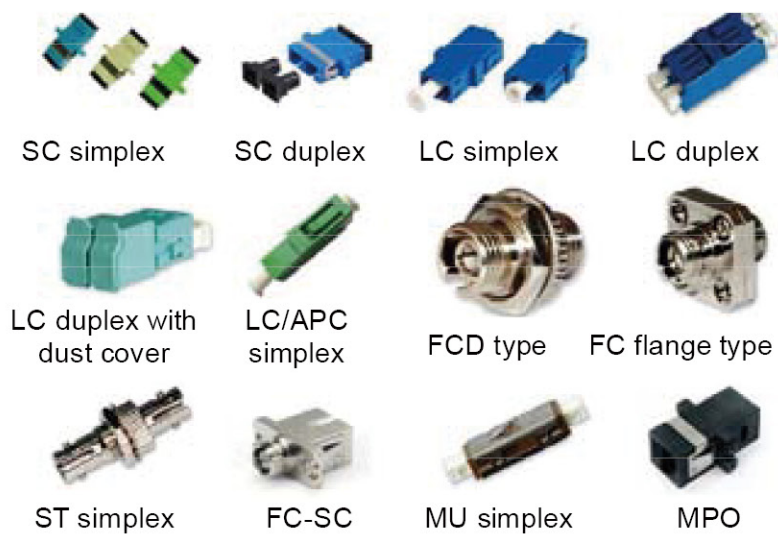
Side A	Polish A	Side B	Polish B	Fibre	Cable	Length	Angle
FC	PC	LC	PC	PMF	0.9mm	1m	0°
LC	UPC	FC	UPC		2.0mm	5m	90°
	APC		APC		3.0mm	10m	customized



No.: A0300392

Optical Fibre Adapter

Optical fibre adaptor is used to join two optical connectors with precise positioning by ceramic sleeve to achieve low insertion loss.



Characteristics

- Metal or plastic housing
- Low insertion loss, high strength, high precision
- Durability :1000times

Complied Standards

- Meet standards: Telcodia GR-326-CORE Issue 4, IEC 61754, YD/T 1272 series.



Performance

Type	FC/ST/SC/LC , etc	
Fibre Type	Single-mode	Multi-mode
Insertion Loss(dB)	Typical 0.2,Max.0.3	Typical 0.2,Max.0.3
Operation Temperature (°C)	-40~ +75	-40~ +75
Environment-friendly	Comply with RoHS	Comply with RoHS

Order Guide

Connector	Polish	Fibre count	Fibre	Color
FC	PC	Simplex	SM	Blue
SC	APC	Duplex	MM	Green
LC				Silver
ST				
MU				
MPO				
FC-ST				
ST-FC				
FC-SC				

www.yofc.com


This datasheet can only be a reference, but not a supplement to the contract. Please contact our sales people for more detailed information

Optical Fibre Attenuator

Offer a complete high performance online attenuator, adjustable attenuator, Male-female attenuator to achieve optical power attenuation.



Characteristics

- Metal or plastic housing(except for online type)
- 1dB~30dB precise optical power attenuation
- Available in a variety of connector types
- Adjustable attenuator can be adjusted from 0 to 30dB

Complied Standards

- Meet standards: Telcodia GR-910-CORE Issue 4, IEC 61754,YD/T 1272 series

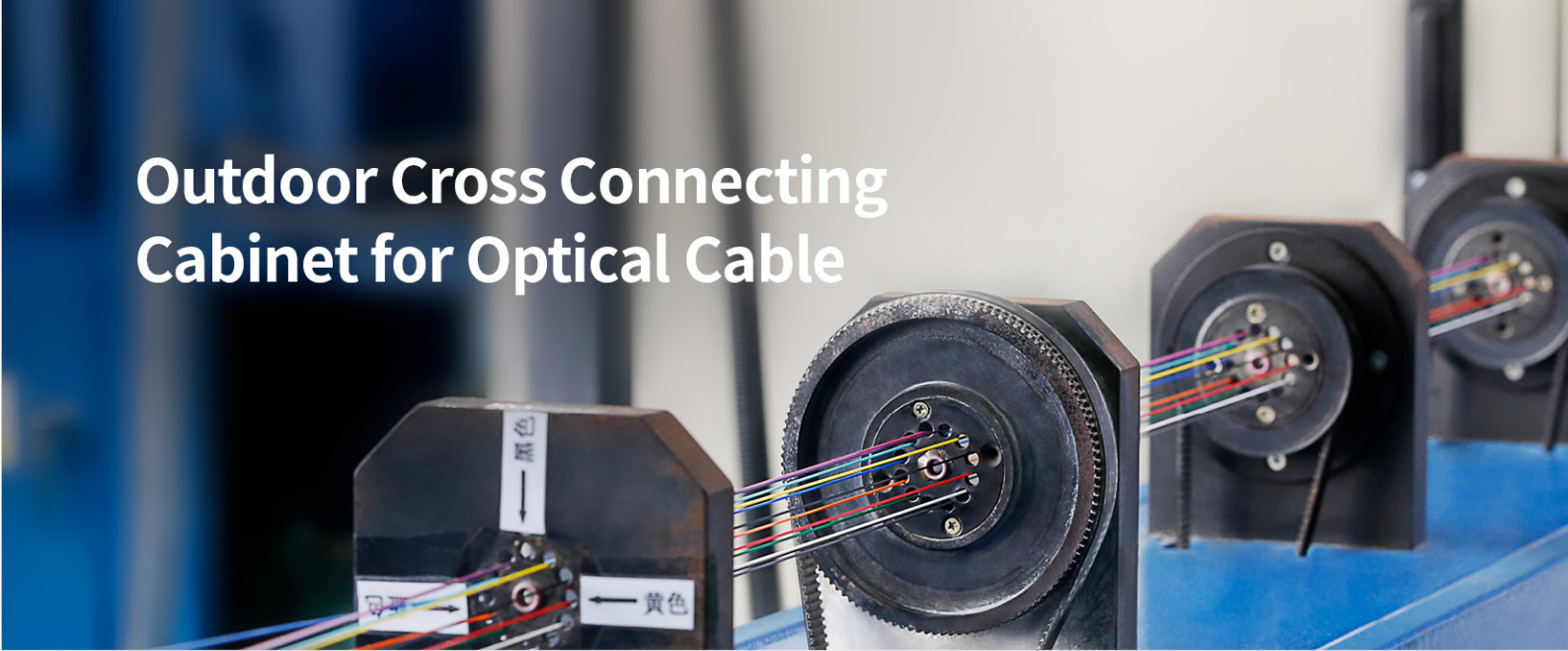
Performance

Type	Attenuation	Tolerance	Working Wavelength	Return Loss(dB)	Connector Type
Online	1~5dB,6~30dB	± 0.5 dB, $\pm 10\%$	1310nm, 1550nm, 1310&1550nm	UPC ≥ 50 , APC ≥ 60	LC,SC,FC,ST
Adjustable	0~30dB	$\pm 10\%$	1310nm, 1550nm	UPC ≥ 50 , APC ≥ 60	FC
Male-female	1~10dB,11~30dB	± 0.5 dB, $\pm 10\%$	1310nm, 1550nm, 1310&1550nm	UPC ≥ 50 , APC ≥ 60	LC,SC,FC,ST

Order Guide

Type	1dB	Connector type	Polish	Fibre	Color	Wavelength
Online attenuator	2dB	LC	PC	SM	Blue	1310nm
Adjustable attenuator	5dB	SC	APC	Attenuated fibre	Green	1550nm
Male-female	15dB	ST			Silver	1310&1550nm
Attenuator	0~30dB	FC				

Outdoor Cross Connecting Cabinet for Optical Cable



GXF035 series Cross Connecting Cabinets are interface devices for the junction of trunk cables and distribution cables in the optical transmission network, used to implement the cable fixation and protection, optical fibre splicing and termination, optical fibre route allocation and scheduling, internal equipment protection and other value-added module installation etc.

Performance

- Operating temperature: $-40^{\circ}\text{C} \sim +60^{\circ}\text{C}$
- Ambient humidity: $\leq 95\%(+40^{\circ}\text{C})$
- Atmospheric pressure: $70\text{ kPa} \sim 106\text{ kPa}$
- Protection class: IP65
- Insulation resistance: The insulation resistance between grounding device and cabinet metal components is not less than $2 \times 10^4\text{ m}\Omega / 500\text{ V(DC)}$
- Withstand Voltage: The withstand voltage between grounding device and cabinet metal components is not less than $3000\text{ V(DC)}/1\text{min}$
- Insertion loss: $\leq 0.3\text{ dB}$
- Return loss: PC type $\geq 45\text{ dB}$, UPC type $\geq 50\text{ dB}$, APC type $\geq 60\text{ dB}$

Complied Standards

- Meet national standards such as YD/T988-2007, GB/T2423-2008, GB/T3873-1998, GB/T9286-1998 and international standards such as IEC 60529, IEC 62134-1, UL94.

Pre-terminated Bow-type Drop Cable

The product is made up of indoor bow-type drop cable and fibre connector(s), which can be used for household wiring in FTTH.



Characteristics

- Low insertion loss, high return loss
- High strength, and comply with the construction requirements
- Durability: 500times
- LSZH outer sheath

Complied Standards

- Meet standards: Telcodia GR-326-CORE Issue 4, IEC 61754 series, YD/T 1272 series.

Performance

Connector type	FC/SC, etc.	
Fibre	Single-mode	Multi-mode
Insertion Loss(dB)	Typical 0.2,Max.0.3	Typical 0.2,Max.0.3
Return Loss(dB)	PC \geq 45, UPC \geq 50, APC \geq 60,	NA
Operation Temperature (°C)	-40~+75	-40~+75
Fibre Retention	50N	50N
Environment-friendly	Comply with RoHS	Comply with RoHS

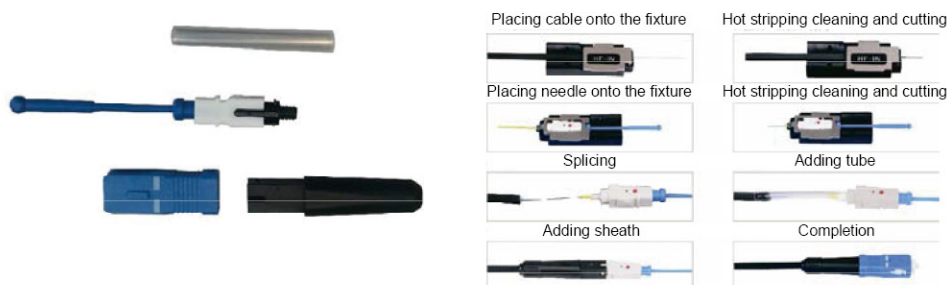
Order Guide

Side A	Polish A	Side B	Polish B	Fibre	Cable	Length
FC	PC	PC	PC	G.652D	2.0×3.0mm	1m
SC	UPC	SC	UPC	G.657A2	Customized	5m
	APC		APC	Customized		10m
						20m
						Customized

Fusion Splice Type Field Assembly Optical Fibre Connector

Field assembly optical fibre connector is designed and widely used for simple and fast field termination of fibres, by mechanical or fusion splice. It has the same connection performances with other standard connectors, and it is compatible with standard connectors and outlets.

Fusion splice type field assembly optical fibre connector uses mature fusion technology, and transfers the traditional fusion points from the module into the connector. Available for drop cables, indoor cables.



Characteristics

- Quick and easy field assembly
- Heat shrinkable tube inside, reliable performance

Complied Standards

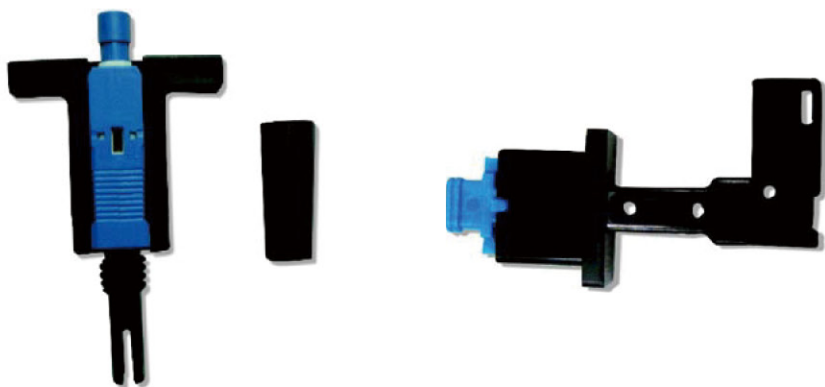
- Meet standard: YD/T 2341.2-2011

Performance

Connector Type	
Insertion Loss	Typical ≤ 0.2 , Max. ≤ 0.4
Return Loss	UPC ≥ 50 , APC ≥ 60
Operation Temperature(°C)	-40~+75
Durability	500times
Water Immersion	168h
Environment-friendly	Comply with RoHS

Mechanical Type Field Assembly Optical Fibre Connector

Mechanical type field assembly optical fibre connector is designed and widely used for mechanical field termination of fibres. It is divided into preset optical fibre mechanical connection and direct connection (non-preset optical fibre mechanical connection), YOFC provides the preset optical fibre type with straight type and L type available



Characteristics

- Quick and easy field assembly with connection time less than 30s
- Low insertion loss
- Repeatable assembly

Complied Standards

- Meet standard: YD/T 2341.1-2011

Performance

Connector type	
Repeatable Operation	≥5times
Insertion Loss (dB)	Typical 0.25,Max. 0.5
Return Loss (dB)	UPC≥40, APC≥55
Operation Temperature (°C)	-40~+75
Durability	500times
Water Immersion	168h
Environment-friendly	Comply with RoHS

Order Guide

Connection Type	Connector	Polish	Shape	Fibre	Cable
Direct through	SC	UPC	Straight	G.657A2	Bow type drop cable
Pre-embedded	FC	APC	L	Customized	Customized
Fusion splice	LC				



FTTH Accessories

Outdoor Accessories for Aerial Drop Cable

Steel hoop	Wire wheel	C-Type hook
		
Screw buckle	S-type fixure	Clamp hoop
		
Binding hook	Confining retractor	Distribution box (Φ25mm)
		

Corridor accessories for indoor drop cable

Dual-wall corrugated pipe (Φ20mm、Φ25mm)	corrugated pipe clamp (Φ20mm、Φ25mm)
	

Indoor Accessories for Indoor Drop Cable

Sealed cable slot



Cable fixed slot



Straight cable slot



Cable ending slot



Corner piece



Internal corner



External corner



Soft tube for cable slot



Cable clip



Through-wall sleeve



Self-wrap sleeve





Yangtze Optical Fibre and Cable Joint Stock Limited Company

Stock Code: 601869.SH 06869.HK

ADD: No.9 Optics Valley Avenue, Wuhan, Hubei, China(P.C.: 430073)

Tel: 400-006-6869 **Email:** 400@yofc.com

en.yofc.com

Facebook: Yangtze Optical Fibre and Cable Joint Stock Limited Company

LinkedIn: Yangtze Optical Fibre and Cable Joint Stock Limited Company

© 201909 YOFC All Rights Reserved



WeChat